

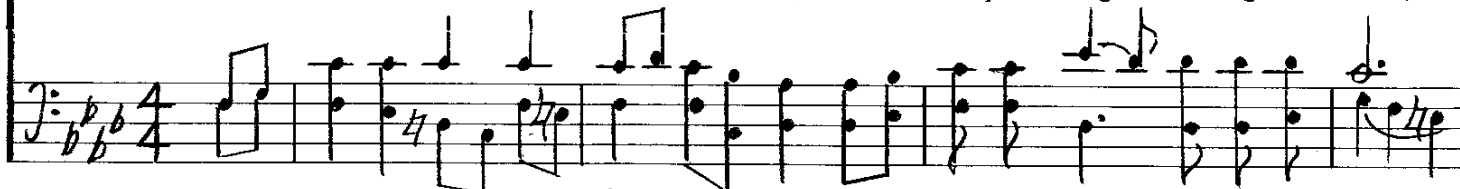
FROM EDEN TO THE END OF TIME

Words and music by
James L. Clark

Tune: MANNA
L.M.D.



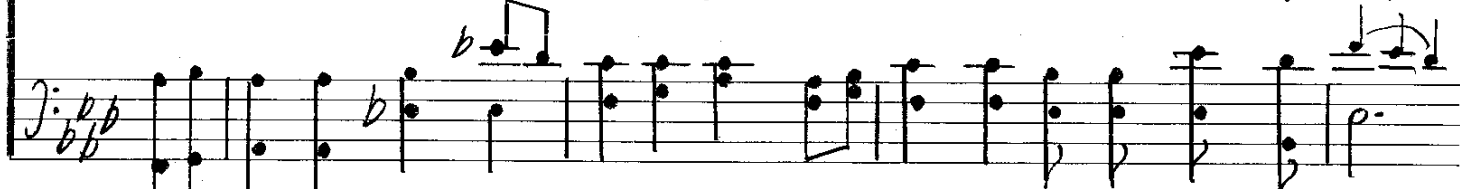
1. From E - den to the end of time, In Al - pha through O - meg - a's rhyme,
2. From E - den to the end of time, In Al - pha through O - meg - a's slime,
3. From E - den to the end of time, In Al - pha through O - meg - a's clime,



Each birth and death, be - gin - ning, end, Of lives or things on God im - pend,
God sees all mean - ness, wick - ed - ness, But gives man - kind per - mis - sive - ness,
No mat - ter where, no mat - ter when, God's prom - ise is to be there then



Since of Cre - a - tion God is source, Pri - me - val and main - tain - ing force,
So that each per - son may be free To re - a - lize what all can be,
When pain or grief or fail - ures pose Them - selves to be one's dead - ly foes,



And so each gen - er - a - tion's course Is God's to damn or to en - dorse.
Thus, in God's im - age use the mind To fash - ion life by each de - fined.
God's prom - ise stays stead - fast and sure For strength to cope, all things en - dure.

