

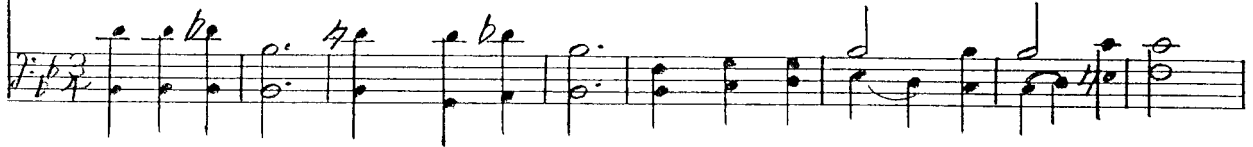
O CROSS OF SHAME

Words and Music by
James L. Clark

Tune Name: Tomb of Nil
8.8.8.8. [D]



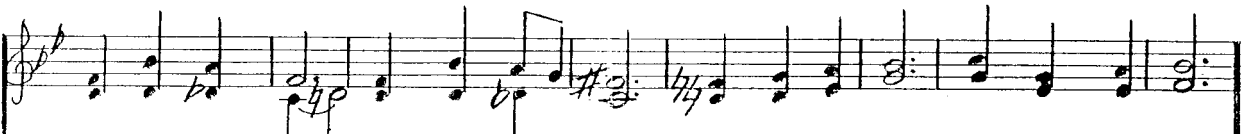
1. O cross of shame, an - guish and pain, Lo - cus of blame where Christ is slain,
2. O tomb of nil, rock - bound and cold, Site where God's will meets death's grim hold,
3. O cross of Christ, sym - bol of pain, O cross of Christ where death is slain;



Blood - cov - ered tree leafed with Christ's flesh, Where all can see hate and love mesh;
Sword-guarded - ed hole, Christ's fi - nal bed, End of man's role, place of his dread;
Blood - cov - ered tree - God's strange de - cree, Where all can see Love's en - ti - ty;



O cross of shame, God-point-ed bier, Christ to de - fame, man-point-ed fear,
O tomb of nil, God - riv - en bier Emp - ty and still, Je - sus not here,
O tomb of Christ - no rest-ing place, O tomb of Christ, God - emp-tied space;



Cross that be - came Sa - tan's last verse, Cross to pro - claim sin's fi - nal curse.
Tomb that be - came God's o - pen door, Tomb to pro - claim life ev - er more.
Sword-guard-ed hole no long - er whole, End of earth-role - hope for man's soul.

