

JESUS SAVIOR, IN BETHLEHEM BORN

Words and music by
James L. Clark

Tune: MORN
9.9.9.9.

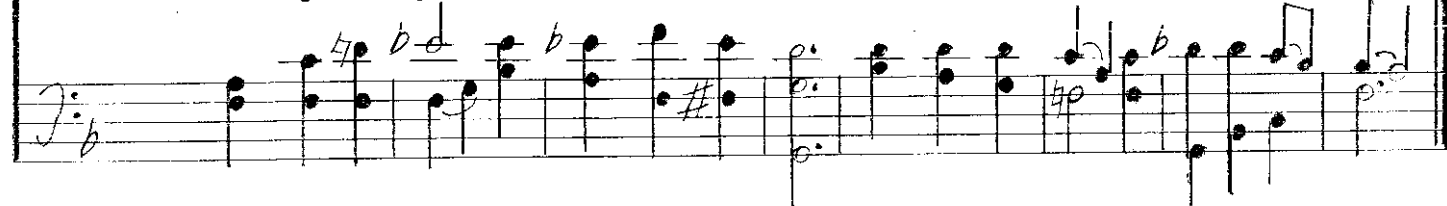
May be sung in unison



1. Je - sus Sav - ior, in Beth - le - hem born, Sent to a peo - ple wea - ry and worn,
2. Je - sus Sav - ior, of all com - forts shorn, Spend - ing his life to help those for - lorn,
3. Je - sus Sav - ior, on Gol - go - tha torn, Giv - ing his life that life be re - born,



Come in the night, a peas - ant to scorn, Dawn - ing God's light to bring in the morn.
Serv - ing man - kind though heaped with its scorn, Fac - ing the pain, the nail and the thorn.
Ris - ing to glo - ry, God's prom - ise sworn, End - ing Death's night in e - ter - nal morn.



Jesus Savior, in Bethlehem born,
Sent to a people weary and worn,
Come in the night, a peasant to scorn,
Dawning God's light to bring in the morn.

Jesus Savior, of all comforts shorn,
Spending his life to help those forlorn,
Serving mankind though heaped with its scorn,
Facing the pain, the nail and the thorn.

Jesus Savior, on Golgotha torn,
Giving his life that life be reborn,
Rising to glory, God's promise sworn,
Ending Death's night in eternal morn.