

IN THE SCHEME OF EVERYDAY

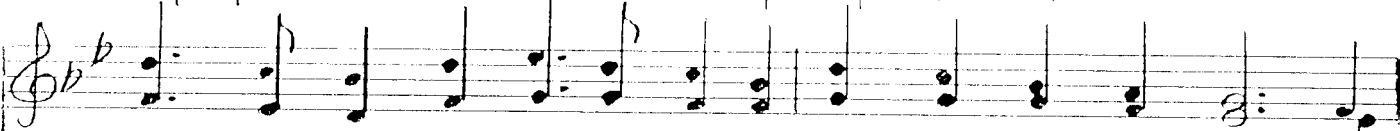
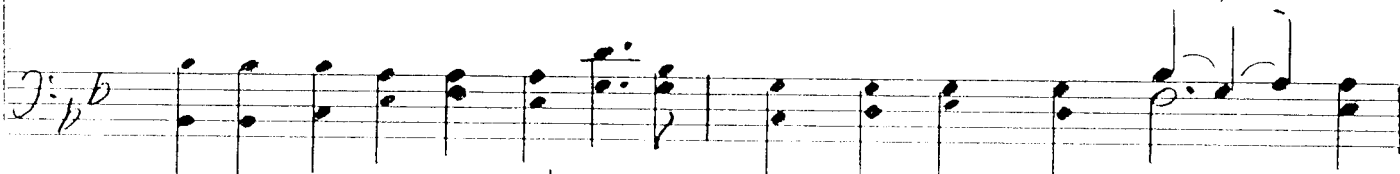
Words and Music by  
James L. Clark



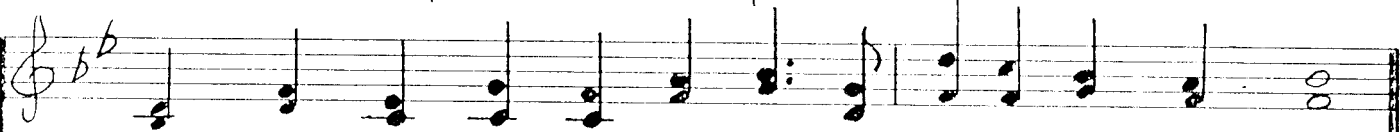
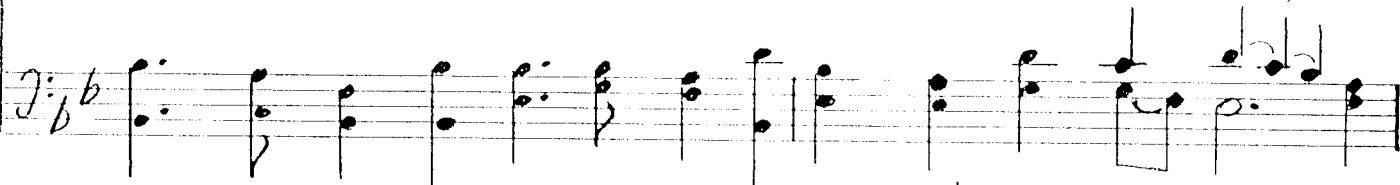
1. In the scheme of ev-ery-day - The breadth and depth of life, A -
2. In man's scheme of ev-ery-day - His scope and shape of life, A -
3. In God's will for ev-ery-day - The breath and death of life, A -  
death



mid the theme of pre - de-cay Re - marked by joy and strife; When  
mid his theme of self- de-cay Re - marked by peace and strife; When  
mid His theme of no de-cay Re - marked by hope in strife; When



blight would seem to curse the day, or beau - ty bless, in - stead, And  
wrong would seem to win the day, Or right pre - vail, in - stead, And  
night would seem to kill the day, Or light pre - vail, in - stead, And



puz - zled child thus fear the way, Can God al - lay his dread?  
fear - ful wretch yearn for the way, Will God pre-empt his dread?  
fran - tic pil - grin seek the way, the Lord will purge his dread.

